

Room with a view

Opening up an isolated kitchen transforms it from a blind alley to the expansive hub of family life

BY CAROLE BRADEN • PHOTOGRAPHS BY LISA ROMEREIN

STORAGE AND COUNTER

space shortages are standard issue in old-house kitchens, and Jill Martin and Andrew Kylander-Clark's was no exception. But the couple, who share the 1940s bungalow, in Santa Barbara, California, with their two young sons, had a site- (and sight-) specific complaint: The kitchen was one big blind spot. "It was cut off from every other room in the house," says Jill, an avid home cook. "I needed to be able to make a meal *and* see what my kids were up to."

Interior designer Jessica Risko Smith, charged with redoing the space, had a simple solution—fix the flow. First up: removing the door and wall that closed off the kitchen from the laundry at one end and the narrow pocket door to the dining room at the other. Ditching both created wider passageways to open up the space. Next, moving the sink tapped a light-filled alcove—and allowed for Jill's coveted farmhouse basin. Now the kitchen has ample meal-prep areas and is packed with both open and closed storage. "We doubled our counter space and found a place for everything," Jill says. "All while improving the view in every direction."

BEFORE Marooned at the front of the house, the kitchen had an odd corner sink and dated finishes.

AFTER The sink got a new home in an existing bay with all-new windows for front-yard views. Open shelves and storage cubbies keep the space feeling airy and bright. Sink: Rohl. Faucet: Grohe



BEFORE

• **before + after:**
kitchen design



homeowner tip

JILL MARTIN,
SANTA BARBARA, CALIF.

“A section of butcher-block countertop disguises a necessary seam in the veined quartzite. And it’s so useful—it’s one of the things I love most about the kitchen.”

A step stool makes accessing ceiling-high storage easy. The “pocket” shelves were deliberately left open so that Jill wouldn’t forget about her trove of cookbooks and serving pieces. Paint (walls and upper cabinets): Frazee Paint’s Akamina



Lots of light, a cool color palette, and vastly improved flow make the galley-style kitchen feel spacious and inviting. Jill wanted a calm, clean look, so she opted for custom cabinets painted dove gray, which carries through to the upper walls of the adjacent dining room. Paint (gray cabinets): Sherwin-Williams’s Cityscape



A food-prep station to the right of the sink includes open dry-goods storage, a stretch of built-in butcher block for knife tasks, and a lift insert in a lower cabinet for the stand mixer, which formerly lived in the laundry-room closet. Butcher block: IKEA. Subway tile: Buena Tile + Stone

Hand-painted tile on the range wall adds a big-budget touch to the economical white subway tile used elsewhere in the room. Andrew, a geologist, vetoed stain-thirsty marble counters in favor of equally pricey gray-veined quartzite, which can be as durable as granite. Tile: NS Ceramic. Range: Wolf

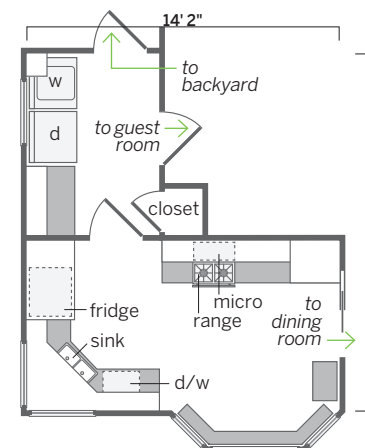


The new hardwood floors were stained to match those in the rest of the house. They offer a warm contrast to the cool-gray cabinets. Refrigerator: Samsung. Lights: Restoration Hardware. Cabinet knobs and pulls: Emtek

KEEN ON OPEN SHELVING?
Find a user’s guide at thisoldhouse.com/janfeb2016

before

Awkward doorways to the laundry and dining rooms made the kitchen feel cut off.



after

Incorporating the laundry room and dining area into one continuous circuit makes the home’s first floor more functional and family-friendly.

